

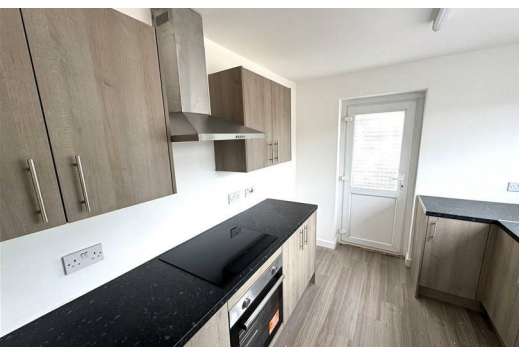


11 Hillview Crescent, Newport, NP19 4NT
£1,100 Per Calendar Month


SAGE & CO are delighted to offer TO LET this newly refurbished throughout WELL PRESENTED THREE BEDROOM Semi detached property situated in Newport. Close to local amenities, schools and road links
The property comprises of a entrance hallway, spacious lounge / dining room, new fitted kitchen .To the first floor are three bedrooms and a bathroom. The property also benefits from a level rear garden and benefits from off road parking

AVAILABLE NOW
VIEWING HIGHLY RECOMMENDED

Applicants will require an annual income of over £37,714.00
Holding deposit £252.87



Lakeside House, Llantarnam Parkway, Cwmbran, NP44 3GA
Telephone: 01633 838 888 **Email:** cwmbran@sageandco.co.uk

Energy Efficiency Rating		
	Current	Potential
Very energy efficient - lower running costs		
(92 plus) A		
(81-91) B		
(69-80) C		
(55-68) D		
(39-54) E		
(21-38) F		
(1-20) G		
Not energy efficient - higher running costs		
England & Wales	EU Directive 2002/91/EC	

Environmental Impact (CO ₂) Rating		
	Current	Potential
Very environmentally friendly - lower CO ₂ emissions		
(92 plus) A		
(81-91) B		
(69-80) C		
(55-68) D		
(39-54) E		
(21-38) F		
(1-20) G		
Not environmentally friendly - higher CO ₂ emissions		
England & Wales	EU Directive 2002/91/EC	